

CASM electric cylinders with brushless DC motors



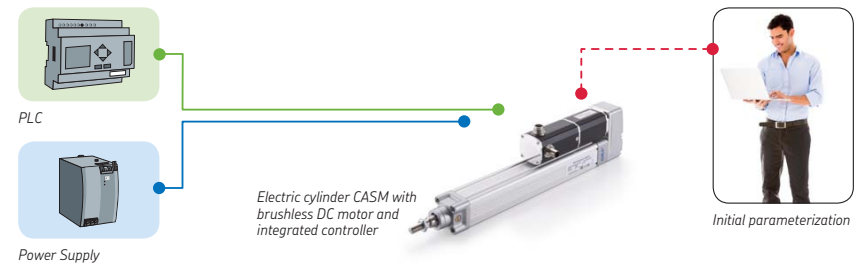
Introduction

CASM electric cylinders powered by brushless DC motors are ideally suited for fast and powerful movements. Replacement of pneumatic cylinders has never been easier. Just parameterize the cylinder by using the SKF Drive Assistant software and benefit from variable speed, high positioning accuracy, high force and long lifetime. The highly efficient electric cylinder will help to increase productivity with less energy consumption and therefore less CO₂ emissions. Due to the tremendous energy savings electric cylinders provide, when compared to pneumatic solutions, the investment cost will be paid back in a short time period.

After the parameterization, the DC powered cylinder can be operated independently by PLC or by switches. The motion controller is already built in.



CASM with Dunkermotoren connecting diagram



Size comparison

Data overview

Motor type	Linear unit	Screw type	BG 45x30 PI			BG 65x50 PI			BG 75x75 PI			BG 75x75 PI					
			CASM-32	LS	BS	BN	CASM-40	LS	BS	BN	CASM-40	LS	BS	BN	CASM-63	LS	BN
Peak force	F_{peak}	[N]	300	700	462	600	1170	526	600	2375	1484	1000	1885	942			
Mean load	F_m	[N]	300	327	131	465	440	198	600	1020	459	692	583	292			
Max. linear speed	v_{max}	[mm/s]	60	150	500	70	300	825	70	300	825	70	530	1060			
Max. acceleration	a_{max}	[m/s ²]	1	6	6	1	6	6	1	6	6	1	6	6			

SKF Drive Assistant

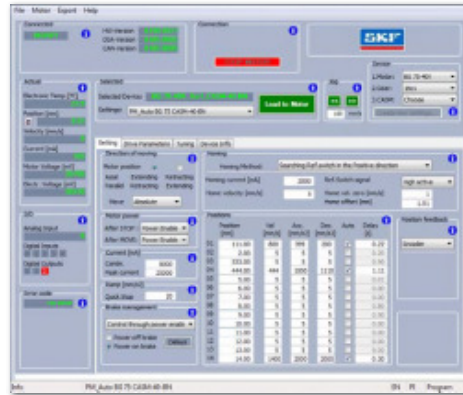
Parameterize CASM with brushless DC motors with just a few clicks, using the SKF Drive Assistant (requires a Windows PC).

SKF Drive Assistant

- Select your linear unit, gearbox and motor and parameterize up to 14 positions in mm, not in encoder counts
- Choose individual motion profiles (acceleration, speed, deceleration) for each position
- Upload parameters into the motor by using the USB interface cable to get an independent system
- Get real time information about your connected motor

Operation

- Let your powered system move either with standard switches, with PLC binary outputs or with an autonomous positioning loop.
- Get feedback of the motor in case it is moving, has reached its position but also if it hasn't found the home position or if there is an error.



Positioning Modules

Simple

- Move between two positions
- Define one speed, acceleration and deceleration for both positions
- "Move-enable" for safety functions

Standard

- Move between six positions
- Define one speed, acceleration and deceleration for each position
- "Move-enable" for safety functions

Advanced

- Move between 14 positions
- Define individual speed, acceleration and deceleration for each position

Typical Applications

Replacement of pneumatic cylinders
Tilt tray sorters, cutting machines, opening and closing hoods, clamping and fixturing, folding, stopping, labelling, etc ...

Typical Applications

Conveyor sorters (diverters) of packaging machines, positioning functions, valve control systems, adjustable filling and portioning systems

Typical Applications

Electric presses, woodworking machines, handling applications, testing equipment, special applications where different speeds or plenty of positions are needed

Automatic Mode

The automatic mode allows the creation of an autonomous positioning loop without any PLC. As soon as the automatic mode is activated (such as by a switch), the actuator moves from one position to the next one with its defined motion profile.

Automatic mode

- Autonomous loop, moving from one position to the next one, as long as the automatic mode is active
- Selection of the positions to be taken in the loop by a mouseclick
- Activation of automatic mode such as by a switch

Typical Applications

Applications with actuators running autonomously, with no need to be coordinated with other actuators, like pumps, cutters, testing equipment etc ...

Benefits of using these actuators

Features

- Compact size
- Integrated motion controller
- Programming software
- High efficiency
- Fully tested system
- PLC interface
- Integrated brake
- Variable speed
- Lubricated for life
- Built-in encoders
- High quality lead- or ball-screws

Benefits

- Saves space in the application and in the switchboard
- Less wiring needed as the controller is already built-in
- Easy to parameterize motion profiles
- Cuts energy costs and reduces CO₂ emissions
- Reliable and long lasting
- Easy to operate by PLC or switches
- No actuator movement in case of a power loss
- Optimizes cycle times
- Reduces maintenance cost
- High positioning accuracy
- High force capacity and long lifetime

Applications



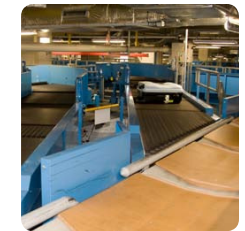
Replacement of pneumatic cylinders



Material handling, pick and place



Packaging/ folding/ cutting



Sorting/ positioning/ stopping

For more information, please visit www.skf.com/casm

© SKF is a registered trademark of the SKF Group.

© SKF Group 2014
The contents of this publication are the copyright of the publisher and may not be reproduced (even extracts) unless prior written permission is granted. Every care has been taken to ensure the accuracy of the information contained in this publication but no liability can be accepted for any loss or damage whether direct, indirect or consequential arising out of the use of the information contained herein.

PUB MT/P8 15221 EN - November 2014

Certain image(s) used under license from Shutterstock.com

CASM-32

Brushless DC motor BG 45 and adapters

CASM-32 linear units with brushless DC motors are perfectly suited to replace pneumatic cylinders in many applications.

It is a very simple system to set up. Connect the motor to a 24 V DC power supply and program up to 14 motion profiles with your computer and the programming accessory kit.

After programming the motor, the motion profile can be activated by 2 – 4 binary signals (PLC outputs or switches) and the actuator will run to the defined position.

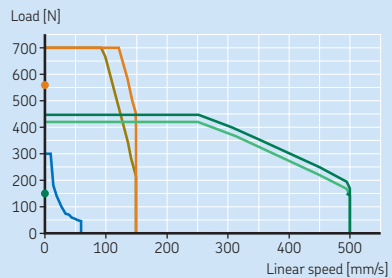
The brushless, DC motor BG 45x30 PI, comes with an internal encoder with 1 024 counts per turn for high positioning accuracy. The internal brake is activated after each movement to secure the system in case of a power loss and to give the motor time to cool down when not in operation.

The brake also enables an increase in the power performance of a full motion cycle.

For more information, please visit the following site:
www.skf.com/casm



Load / linear speed diagram



- CASM-32-LS
- CASM-32-BS, a = 1 m/s²
- CASM-32-BS, a = 6 m/s²
- CASM-32-BS, brake
- CASM-32-BN, a = 1 m/s²
- CASM-32-BN, a = 6 m/s²
- CASM-32-BN, brake

Load = force acting on the actuator
(gravity force + acceleration force + constant force)

Order numbers for a complete actuator

Order No.

Linear unit according to your needs	See CASM-32 Linear units
Brushless DC motor BG 45x30 PI	BG45X30PI
Adapter kit, parallel or in-line	ZBE-37557x, see below
Accessories according to your needs	See CASM-32 Accessories
Cable kit for BG 45	ZBE-530632-xx, see below

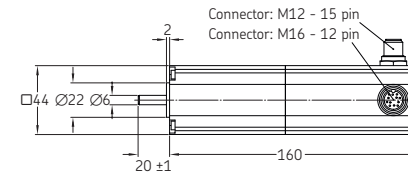
Accessories

Order No.

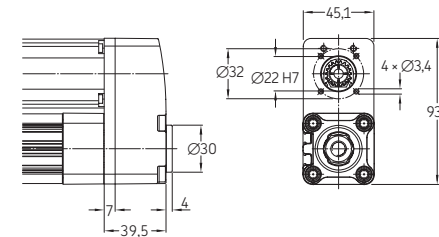
Programming kit for BG motor series	ZBE-530615
Cable kit 3 m for BG 45	ZBE-530632-03
Cable kit 10 m for BG 45	ZBE-530632-10
Replacement belt for parallel adapter	ZBE-375600-32



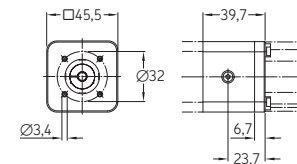
BLDC motor BG45 x 30 with PI interface and brake



Parallel adapter kit for CASM-32 and BLDC motor BG 45



In-line adapter kit for CASM-32 and BLDC motor BG 45



© SKF is a registered trademark of the SKF Group.
© SKF Group 2014
The contents of this publication are the copyright of the publisher and may not be reproduced (even extracts) unless prior written permission is granted. Every care has been taken to ensure the accuracy of the information contained in this publication but no liability can be accepted for any loss or damage whether direct, indirect or consequential arising out of the use of the information contained herein.

PUB MT/P8 14755 EN · September 2014

Order No.: BG45X30PI

Motor data

	Symbol	Unit	BG 45x30 PI
Nominal torque (100 K)	M	Nm	0.25
Stall torque (20 °C)	M ₀	Nm	0.942
Nominal rotational speed	ω	1/min	3 360
Nominal voltage	U	V DC	24
Nominal current (100 K)	I	A	4.87
Peak current (2 s)	I _{peak}	A	15
Max. output power (20 °C)	P _{out}	kW	0.159
Inertia with brake	J	kgm ²	0.0044
Weight with brake	m	kg	0.74

Order No.: ZBE-375573



System capabilities

	F _{peak}	F _m ¹⁾	V _{max}
CASM-32-LS	300 N	300 N	60 mm/s
CASM-32-BS	700 N	327 N	150 mm/s
CASM-32-BN	462 N	131 N	500 mm/s

¹⁾ Mean load over full cycle. For more information please visit skf.com/casm

Order No.: ZBE-375570



System capabilities

	F _{peak}	F _m ¹⁾	V _{max}
CASM-32-LS	300 N	300 N	60 mm/s
CASM-32-BS	700 N	327 N	150 mm/s
CASM-32-BN	462 N	131 N	500 mm/s

¹⁾ Mean load over full cycle. For more information please visit skf.com/casm



CASM-40

Brushless DC motor BG 65S and adapters

CASM-40 linear units with brushless DC motors are perfectly suited to replace pneumatic cylinders in many applications.

It is a very simple system to set up. Connect the motor to a 40 V DC power supply and program up to 14 motion profiles with your computer and the programming accessory kit.

After programming the motor, the motion profile can be activated by 2 – 4 binary signals (PLC outputs or switches) and the actuator will run to the defined position.

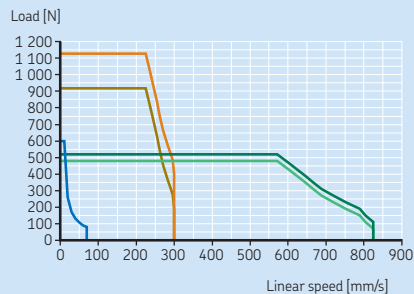
The brushless DC motor, BG 65S × 50 PI, comes with an internal encoder with 4 096 counts per turn for high positioning accuracy. The internal brake is activated after each movement to secure the system in case of a power loss and to give the motor time to cool down when not in operation.

The brake also enables an increase in the power performance of a full motion cycle.

For more information, please visit the following site:
www.skf.com/casm



Load / linear speed diagram



— CASM-40-BS, a = 1 m/s² — CASM-40-BN, a = 1 m/s²
 — CASM-40-BS, a = 6 m/s² — CASM-40-BN, a = 6 m/s²
 — CASM-40-LS

Load = force acting on the actuator
(gravity force + acceleration force + constant force)

Order numbers for a complete actuator

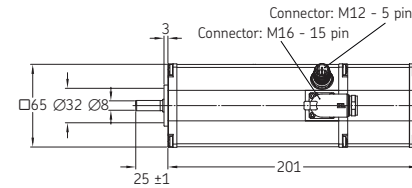
	Order No.
Linear unit according to your needs	See CASM-40 Linear units
Brushless DC motor BG 65S × 50 PI	BG65S50PI
Adapter kit, parallel or in-line	ZBE-37557x, see below
Accessories according to your needs	See CASM-40 Accessories
Cable kit for BG65S	ZBE-530634-xx, see below

Accessories

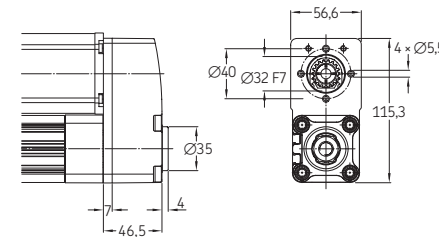
	Order No.
Programming kit for BG motor series	ZBE-530615
Cable kit 3 m for BG 65S	ZBE-530634-03
Cable kit 10 m for BG 65S	ZBE-530634-10
Replacement belt for parallel adapter	ZBE-375600-40



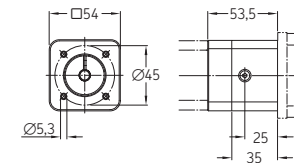
BLDC motor BG 65Sx50 PI with PI interface and brake



Parallel adapter kit for CASM-40 and BLDC motor BG 65S



In-line adapter kit for CASM-40 and BLDC motor BG 65S



© SKF is a registered trademark of the SKF Group.
 © SKF Group 2014
 The contents of this publication are the copyright of the publisher and may not be reproduced (even extracts) unless prior written permission is granted. Every care has been taken to ensure the accuracy of the information contained in this publication but no liability can be accepted for any loss or damage whether direct, indirect or consequential arising out of the use of the information contained herein.

PUB MT/P8 14792 EN · September 2014

Order No.: BG65S50PI

Motor data	Symbol	Unit	BG 65Sx50 PI
Nominal torque (100 K)	M	Nm	0.64
Stall torque (20 °C)	M ₀	Nm	1.41
Nominal rotational speed	ω	1/min	3 595
Nominal voltage	U	V DC	40
Nominal current (100 K)	I	A	7
Peak current (2 s)	I _{peak}	A	20
Max. output power (20 °C)	P _{out}	kW	0.395
Inertia with brake	J	kgm ²	0.0129
Weight with brake	m	kg	1.65

Order No.: ZBE-375574



System capabilities	F _{peak}	F _m ¹⁾	V _{max}
CASM-40-LS	600 N	465 N	70 mm/s
CASM-40-BS	1 170 N	440 N	300 mm/s
CASM-40-BN	526 N	198 N	825 mm/s

¹⁾ Mean load over full cycle. For more information please visit skf.com/casm

Order No.: ZBE-375571



System capabilities	F _{peak}	F _m ¹⁾	V _{max}
CASM-40-LS	600 N	465 N	70 mm/s
CASM-40-BS	1 170 N	440 N	300 mm/s
CASM-40-BN	526 N	198 N	825 mm/s

¹⁾ Mean load over full cycle. For more information please visit skf.com/casm



CASM-40

Brushless DC motor BG 75 and adapters

CASM-40 linear units with brushless DC motors are perfectly suited to replace pneumatic cylinders in many applications.

It is a very simple system to set up. Connect the motor to a 40 V DC power supply and program up to 14 motion profiles with your computer and the programming accessory kit.

After programming the motor, the motion profile can be activated by 2 – 4 binary signals (PLC outputs or switches) and the actuator will run to the defined position.

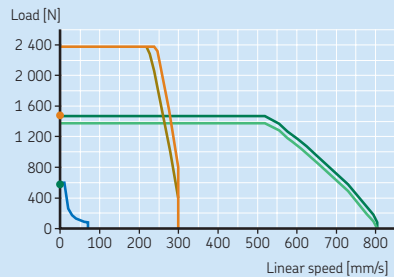
The brushless DC motor, BG 75 x 75 PI, comes with an internal encoder with 4 096 counts per turn for high positioning accuracy. The internal brake is activated after each movement to secure the system in case of a power loss and to give the motor time to cool down when not in operation.

The brake also enables an increase in the power performance of a full motion cycle.

For more information, please visit the following site:
www.skf.com/casm



Load / linear speed diagram



— CASM-40-BS, a = 1 m/s² — CASM-40-BN, a = 1 m/s²
 — CASM-40-BS, a = 6 m/s² — CASM-40-BN, a = 6 m/s²
 ● CASM-40-BS, brake ● CASM-40-BN, brake
 — CASM-40-LS

Load = force acting on the actuator
(gravity force + acceleration force + constant force)

Order numbers for a complete actuator

Order No.

Linear unit according to your needs See CASM-40 Linear units
 Brushless DC motor BG 75 x 75 PI BG75X75PI
 Adapter kit, parallel or in-line ZBE-37557x, see below
 Accessories according to your needs See CASM-40 Accessories
 Cable kit for BG 75 ZBE-530630-xx, see below

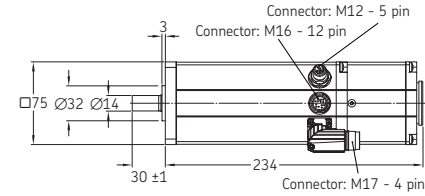
Accessories

Order No.

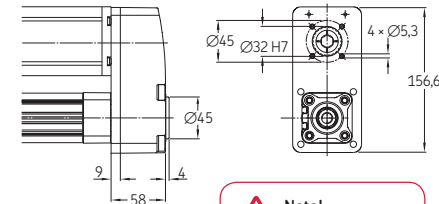
Programming kit for BG motor series ZBE-530615
 Cable kit 3 m for BG 75 ZBE-530630-03
 Cable kit 10 m for BG 75 ZBE-530630-10
 Replacement belt for parallel adapter ZBE-375600-63



BLDC motor BG 75x75 PI with PI interface and brake

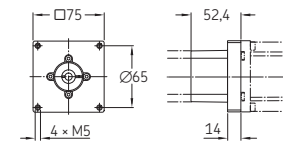


Parallel adapter kit for CASM-40 and BLDC motor BG 75



Note!
For swivel flanges see CASM-63 Accessories.

In-line adapter kit for CASM-40 and BLDC motor BG 75



© SKF is a registered trademark of the SKF Group.
 © SKF Group 2014
 The contents of this publication are the copyright of the publisher and may not be reproduced (even extracts) unless prior written permission is granted. Every care has been taken to ensure the accuracy of the information contained in this publication but no liability can be accepted for any loss or damage whether direct, indirect or consequential arising out of the use of the information contained herein.

PUB MT/P8 14793 EN · September 2014

Order No.: BG75X75PI

Motor data	Symbol	Unit	BG 75x75 PI
Nominal torque (100 K)	M	Nm	1.16
Stall torque (20 °C)	M ₀	Nm	4.1
Nominal rotational speed	ω	1/min	3 700
Nominal voltage	U	V DC	40
Nominal current (100 K)	I	A	12.7
Peak current (2 s)	I _{peak}	A	50
Max. output power (20 °C)	P _{out}	kW	0.95
Inertia with brake	J	kgm ²	0.062
Weight with brake	m	kg	3.08

Order No.: ZBE-375578



System capabilities	F _{peak}	F _m ¹⁾	V _{max}
CASM-40-LS	600 N	600 N	70 mm/s
CASM-40-BS	2 375 N	1 020 N	300 mm/s
CASM-40-BN	1 484 N	459 N	825 mm/s

¹⁾ Mean load over full cycle. For more information please visit skf.com/casm

Order No.: ZBE-375579



System capabilities	F _{peak}	F _m ¹⁾	V _{max}
CASM-40-LS	600 N	600 N	70 mm/s
CASM-40-BS	2 375 N	1 020 N	300 mm/s
CASM-40-BN	1 484 N	459 N	825 mm/s

¹⁾ Mean load over full cycle. For more information please visit skf.com/casm



CASM-63

Brushless DC motor BG 75 and adapters

CASM-63 linear units with brushless DC motors are perfectly suited to replace pneumatic cylinders in many applications.

It is a very simple system to set up. Connect the motor to a 40 V DC power supply and program up to 14 motion profiles with your computer and the programming accessory kit.

After programming the motor, the motion profile can be activated by 2 – 4 binary signals (PLC outputs or switches) and the actuator will run to the defined position.

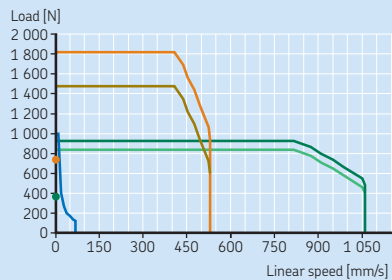
The brushless DC motor, BG 75 x 75 PI, comes with an internal encoder with 4 096 counts per turn for high positioning accuracy. The internal brake is activated after each movement to secure the system in case of a power loss and to give the motor time to cool down when not in operation.

The brake also enables an increase in the power performance of a full motion cycle.

For more information, please visit the following site: www.skf.com/casm



Load / linear speed diagram



— CASM-63-BS, a = 1 m/s² — CASM-63-BN, a = 1 m/s²
 — CASM-63-BS, a = 6 m/s² — CASM-63-BN, a = 6 m/s²
 ● CASM-63-BS, brake ● CASM-63-BN, brake
 — CASM-63-LS

Load = force acting on the actuator (gravity force + acceleration force + constant force)

Order numbers for a complete actuator

Order No.

Linear unit according to your needs	See CASM-63 Linear units
Brushless DC motor BG 75 x 75 PI	BG75X75PI
Adapter kit, parallel or in-line	ZBE-37557x, see below
Accessories according to your needs	See CASM-63 Accessories
Cable kit for BG 75	ZBE-530630-xx, see below

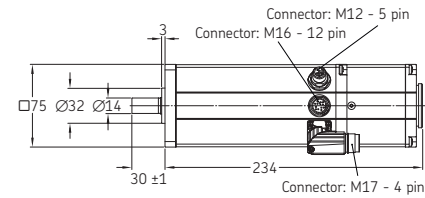
Accessories

Order No.

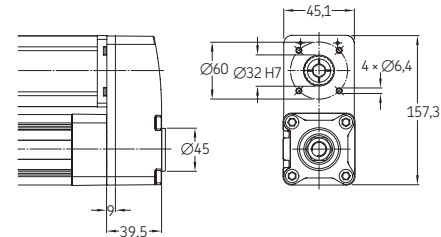
Programming kit for BG motor series	ZBE-530615
Cable kit 3 m for BG 75	ZBE-530630-03
Cable kit 10 m for BG 75	ZBE-530630-10
Replacement belt for parallel adapter	ZBE-375600-63



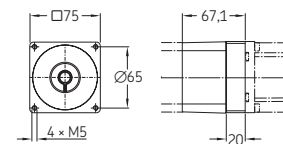
BLDC motor BG 75x75 PI with PI interface and brake



Parallel adapter kit for CASM-63 and BLDC motor BG 75



In-line adapter kit for CASM-63 and BLDC motor BG 75



© SKF is a registered trademark of the SKF Group.
 © SKF Group 2014
 The contents of this publication are the copyright of the publisher and may not be reproduced (even extracts) unless prior written permission is granted. Every care has been taken to ensure the accuracy of the information contained in this publication but no liability can be accepted for any loss or damage whether direct, indirect or consequential arising out of the use of the information contained herein.

PUB MT/P8 14794 EN · December 2014

Order No.: BG75X75PI

Motor data

	Symbol	Unit	BG 75x75 PI
Nominal torque (100 K)	M	Nm	1.16
Stall torque (20 °C)	M ₀	Nm	4.1
Nominal rotational speed	ω	1/min	3 700
Nominal voltage	U	V DC	40
Nominal current (100 K)	I	A	12.7
Peak current (2 s)	I _{peak}	A	50
Max. output power (20 °C)	P _{out}	kW	0.95
Inertia with brake	J	kgm ²	0.062
Weight with brake	m	kg	3.08

Order No.: ZBE-375575



System capabilities

	F _{peak}	F _m ¹⁾	V _{max}
CASM-63-LS	1 000 N	692 N	70 mm/s
CASM-63-BN	1 885 N	583 N	530 mm/s
CASM-63-BF	942 N	292 N	1 060 mm/s

¹⁾ Mean load over full cycle. For more information please visit skf.com/casm

Order No.: ZBE-375572



System capabilities

	F _{peak}	F _m ¹⁾	V _{max}
CASM-63-LS	1 000 N	692 N	70 mm/s
CASM-63-BN	1 885 N	583 N	530 mm/s
CASM-63-BF	942 N	292 N	1 060 mm/s

¹⁾ Mean load over full cycle. For more information please visit skf.com/casm

