



## Accessories MAGSTOP

### Control pillar

#### Description

The Magnetic control pillar is suited to the barriers in dimensions and design. Various access control units are an ideal addition to the barrier systems during automatic operation.

The access control units or switches can be installed in the aluminium front plate in accordance with the wishes of the customer.

The operating height of the control units installed in the front plate is designed for cars.

#### The housing

The solid rectangular pipe has a plastic coating that provides optimum protection against corrosion. The pillar is coated with RAL 2000 coloured paint as a standard feature. Other colours are available on request at additional cost.

The removable, aluminium front plate provides access to the installed components.

#### The foundation

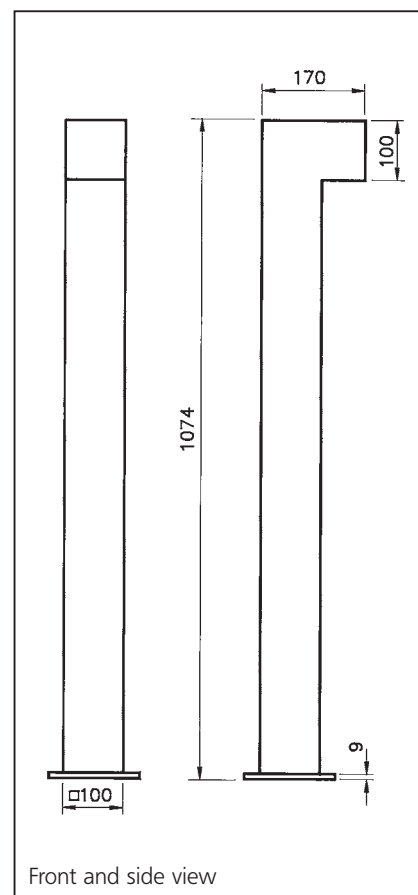
A 300x300 mm foundation with the appropriate frost depth and an inserted, empty pipe with a diameter of 29 for the electrical power supply must be provided for in order to install the base plate.

#### MKA 1 P-200

This version features a code card switch installed in the front plate. An opening impulse is transmitted to the barrier by inserting the authorized code card. Code and authorization are determined by the mother card, which is installed inside the switch. The code is magnetic and therefore invisible and imitation-proof. Practically unlimited numbers of codes offer the possibility for a great number of applications. The code card is made of plastic with magnetic foil. Extra inscriptions on the cards can be made at additional cost.

#### MKA 1 P-300

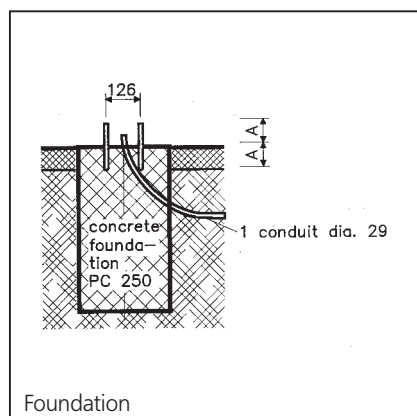
This version features a code key switch built into the front plate. An opening impulse is transmitted to the barrier by inserting the authorized code key. Code and authorization are determined by the mother card, which is installed inside the switch. The code is magnetic and therefore invisible and imitation-proof. Practically unlimited numbers of codes offer a great number of applications. The code card is made of plastic with magnetic foil and can also be attached to a key chain.



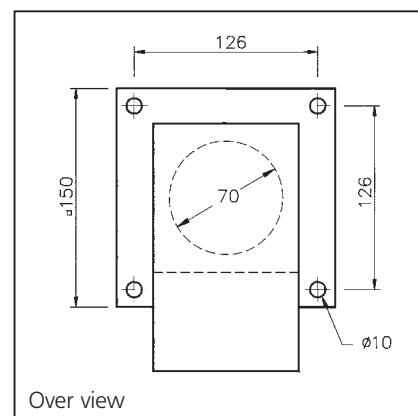
Front and side view

#### MKA 1 P-100

This version features a key-operated button with a semi-profile cylinder built into the front plate. An opening impulse is transmitted to the barrier by turning the key. It is possible to install a semi-profile cylinder provided by the manufacturer that fits the customer's locking system. Delivery includes 2 keys and a cylinder.



Foundation



Over view