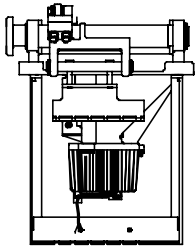


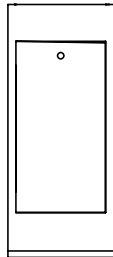
Ersatzteilzeichnung
 spare-parts
 dessin pour pièces
 détachées

MIB30L-A100

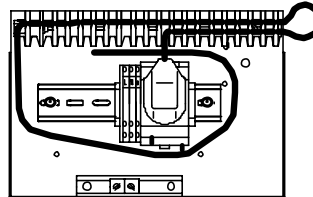
MIB30R-A100



1056,5014
Antriebseinheit
 drive unit
 unité d'entraînement



1045,0171
Gehäuse vormontiert
 housing
 fût



1031,5019
Anschlußeinheit
 supply unit
 plaque support d'arrivée
 d'alimentation

gelb
 yellow
 jaune



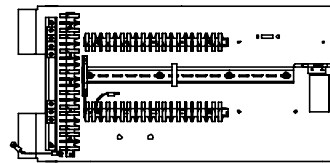
2036,0021

2036,0021
Zugfeder, stark
 spring, strong
 ressort, fort

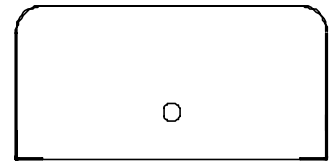
2036,0022
schwach
 weak
 faible



2018,0332
Firmenschild
 name-plate
 plaque signalétique



1031,5020
Montageplatte
 mounting plate
 plaque support de commande



2029,0023
Haube
 hood
 capot



1031,0097
Befestigungssatz
 ancor-set
 kit de fixation



2043,0100
U-Profil
 U-rail
 U-profil



2069,5006
Klammer
 plastic-clamp
 clavette



3466,0019
Schlüssel
 key
 clé



3576,0043
Verschlussstopfen
 rubber-cap
 capuchon



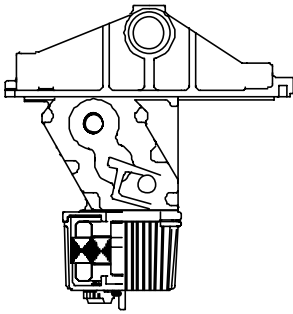
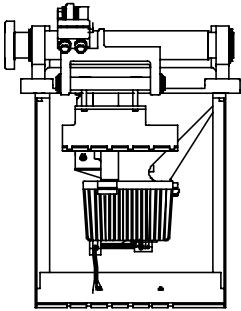
3468,0028
Schloß
 lock
 serrure

1056,5014

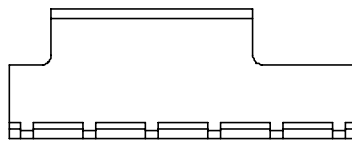
Antriebseinheit

drive unit

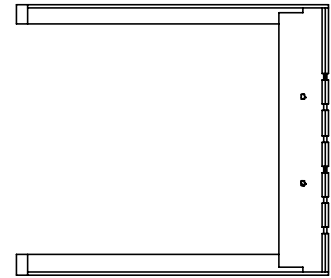
unité d'entraînement



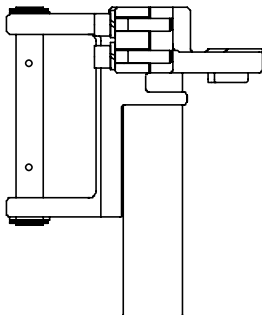
1064,5000 -
Getriebeeinheit
gear unit
unité d'entraînement



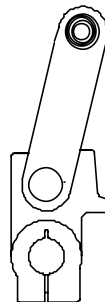
2047,5000
Federtraverse oben
upper spring fixture
support supérieur de
fixation de ressort



1071,5004
Federtraverse unten
lower spring fixture
support inférieur de
fixation de ressort



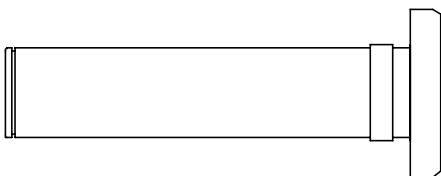
1018,5000
Flanschhebel
flange-lever
levier d'entraînement



1018,5001
Motorhebel
motor lever
levier de sortie réducteur



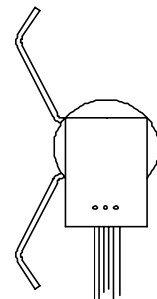
3004,0001
Anschlagpuffer
end stop
butée caoutchouc



1014,0029
Flanschrohr
flange-shaft
arbre porte flasque

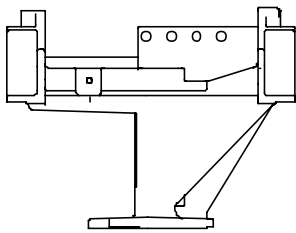
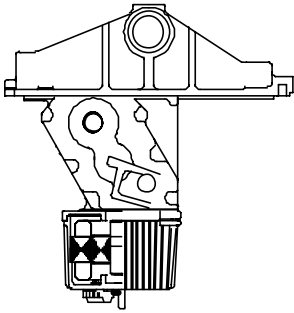


3019,0055
Ø23/20x21

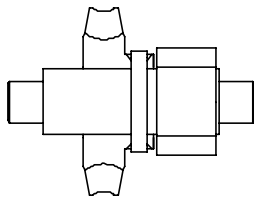


1031,0321
Potentiometer
potentiometer
potentiometer

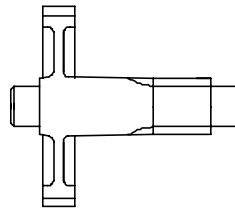
1064,5000
Getriebeeinheit
gear unit
unité d'entraînement



2060,5000
Getriebegehäuse
casting
réducteur



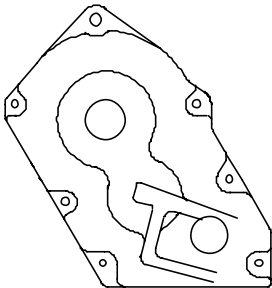
1003,0568
Schneckenradwelle
worm-gear
pignon hélicoïdale



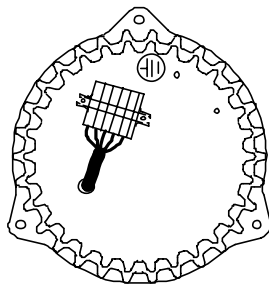
2044,0028
Ritzelwelle
end-shaft
arbre de sortie



3232,0011
Ø47/25x12



2011,5000
Getriebedeckel
gear cover
carter du motoréducteur



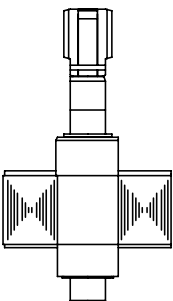
1084,5006
Stator
stator
stator



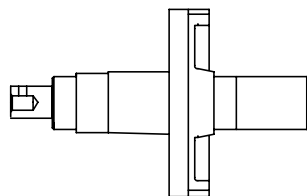
3232,0062
Ø26/10x8



3019,0054
Ø44/40x30



1003,0598
Rotor
rotor
rotor



2044,5002
Zahnradwelle
gear-wheel
pignon réducteur



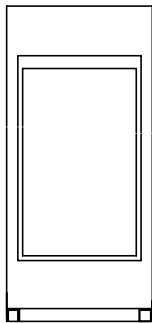
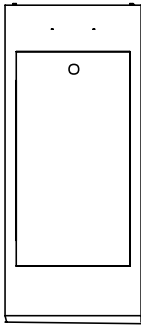
3232,0022
Ø35/15x11

1045,0171

Gehäuse vormontiert

housing

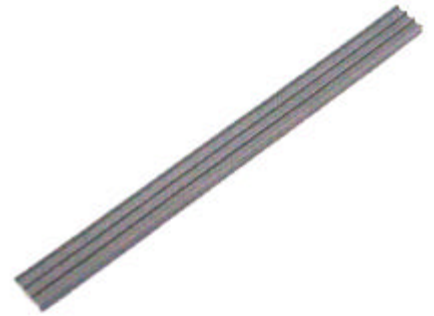
fût



2061,0070
Gehäuse
housing
fût



2043,0152
Türe
door
portillon



3224,0020
Dichtung
seal
joint



3468,0028
Schloß
lock
serrure



3004,0005
Puffer
damper
amortisseur



3147,0011
Kantenschutz
edge protection
bande de protection



2065,0004
Kantenschutz
edge protection
bande de protection