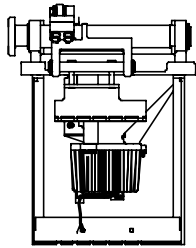
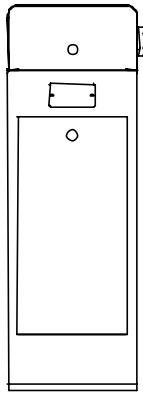


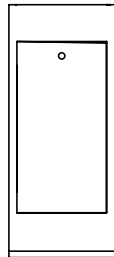
**Ersatzteilkatalog  
spare-parts  
dessin pour pièces  
detachées**

**MIB10L-A317**

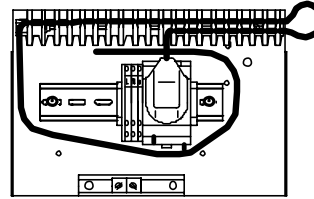
**MIB10R-A317**



1056,5032<sup>-</sup>  
Antriebseinheit MIB10  
drive unit MIB10  
unité d'entraînement MIB10



1045,5075<sup>-</sup>  
Gehäuse vormontiert  
housing  
fût



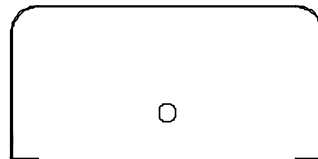
1031,5010  
Anschlußeinheit  
supply unit  
plaque support d'arrivée  
d'alimentation



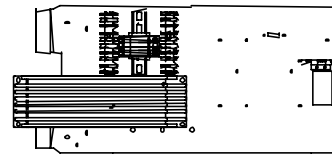
1013,5011  
Steuergerät  
controller  
logique de commande



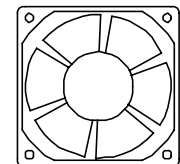
2036,0022  
Zugfeder schwach  
spring weak  
ressort faible



2029,5056  
Haube  
hood  
capot



1031,5170  
Montageplatte  
mounting plate  
plaque support de commande



3281,5002  
Lüfter  
fan  
ventilateur



1031,0097  
Befestigungssatz  
ancor-set  
kit de fixation



2043,0100  
U-Profil  
U-rail  
U-profil



2069,5006  
Klammer  
plastic-clamp  
clavette



3466,0019  
Schlüssel  
key  
clé



3576,5003  
Abdeckkappe  
plastic-cap  
capuchon



3502,5001  
Pass-Scheibe  
washer  
rondelle



3514,5000  
Well Scheibe  
wave-washer  
rondelle ondulée



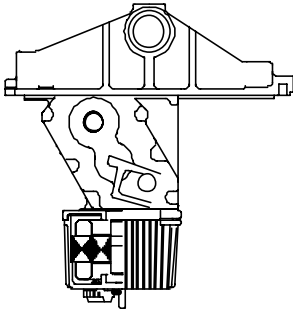
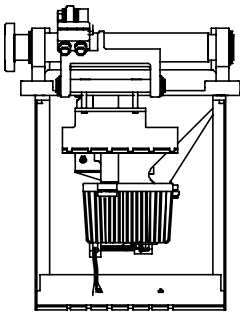
3468,0028  
Schloß  
lock  
serrure

1056,5032

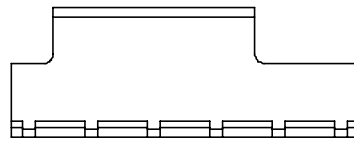
Antriebseinheit MIB10

drive unit MIB10

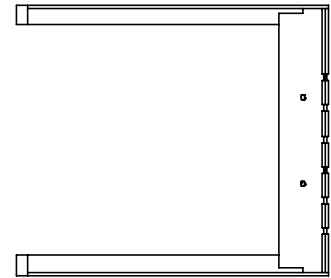
unité d'entraînement MIB10



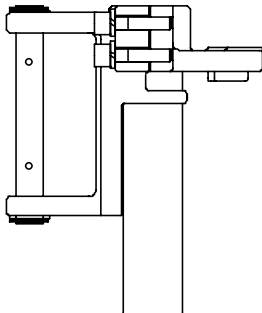
1064,5014 -  
Getriebeeinheit  
gear unit  
unité d'entraînement



2047,5000  
Federtraverse oben  
upper spring fixture  
support supérieur de  
fixation de ressort



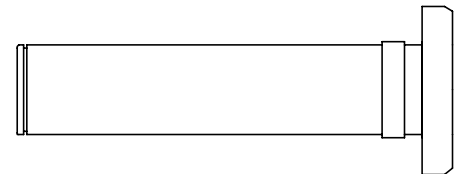
1071,5004  
Federtraverse unten  
lower spring fixture  
support inférieur de  
fixation de ressort



1018,5005  
Flanschhebel  
flange-lever  
levier d'entraînement



1018,5004  
Verbindungshebel kpl.  
lever completed  
levier complét



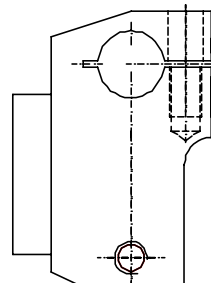
1014,0029  
Flanschrohr  
flange-shaft  
arbre porte flasque



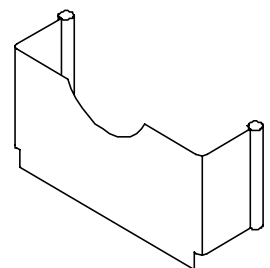
3004,0001  
Anschlagpuffer  
end stop  
butée caoutchouc



3019,0055  
Gleitlager  
plain bearing  
palier lisse  
Ø23/20x21



2056,5006  
Motorhebel  
motor lever  
levier de sortie réducteur



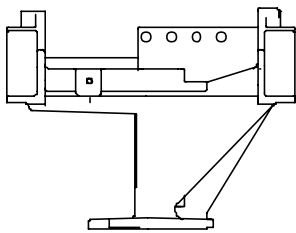
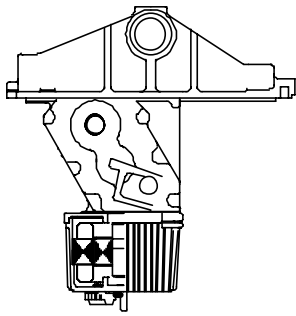
1033,5003  
Schutzwinkel  
protective angel  
protection d'angle

1064,5014

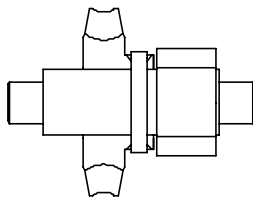
Getriebeeinheit

gear unit

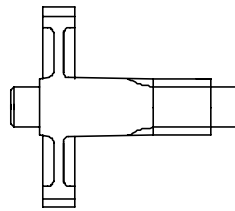
unité d'entraînement



2060,5006  
Getriebegehäuse  
casting  
réducteur



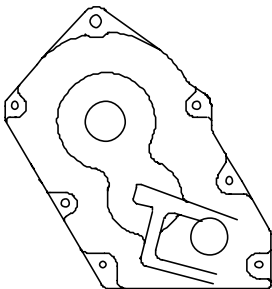
1003,0568  
Schneckenradwelle Ü2  
worm-gear Ü2  
pignon hélicoïdale Ü2



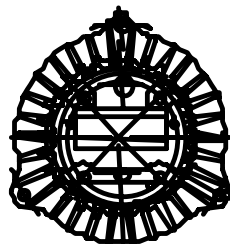
2044,0028  
Ritzelwelle  
end-shaft  
arbre de sortie



3232,0011  
Kugellager  
bearing  
roulement à billes  
Ø47/25x12



2011,5000  
Getriebedeckel  
gear cover  
carter du motoréducteur



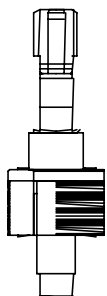
1084,5023  
Stator  
stator  
stator



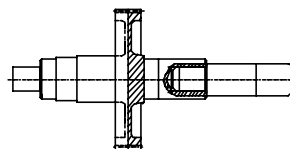
3232,0062  
Kugellager  
bearing  
roulement à billes  
Ø26/10x8



3019,0054  
Gleitlager  
plain bearing  
palier lisse  
Ø44/40x30



1003,5013  
Rotor Ü2  
rotor Ü2  
rotor Ü2



1003,5016  
Zahnradwelle  
gear-wheel  
pignon réducteur



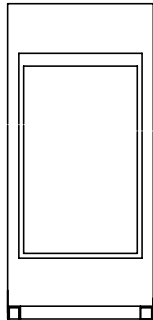
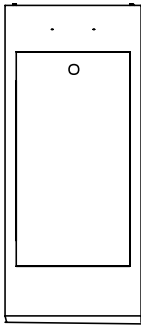
3232,0022  
Kugellager  
bearing  
roulement à billes  
Ø35/15x11

1045,5075

Gehäuse vormontiert

housing

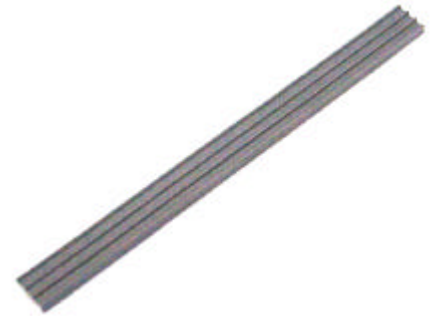
fût



2061,5057  
Gehäuse  
housing  
fût



2043,5150  
Türe  
door  
portillon



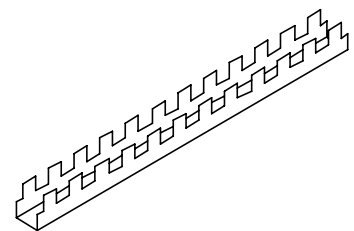
3224,0020  
Dichtung  
seal  
joint



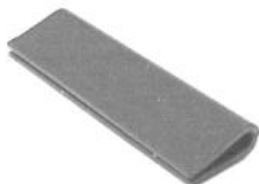
3468,0028  
Schloß  
lock  
serrure



3004,0005  
Puffer  
damper  
amortisseur



3147,0011  
Kantenschutz  
edge protection  
bande de protection



2065,0004  
Kantenschutz  
edge protection  
bande de protection

**Flansch  
flange  
arbre porte lisse**



1031,5055  
Flansch-Set MSB5  
flange-set MSB5  
arbre porte lisse MSB5



1031,5052  
Flansch-Set swing-away MSB5  
flange-set swing-away MSB5  
arbre porte lisse swing-away MSB5



1031,0282  
Flansch-Set swing-away MSB4  
flange-set swing-away MSB4  
arbre porte lisse swing-away MSB4



1031,5037  
Flansch-Set Holzbaum  
flange-set wooden boom  
arbre porte lisse pour lisse de bois